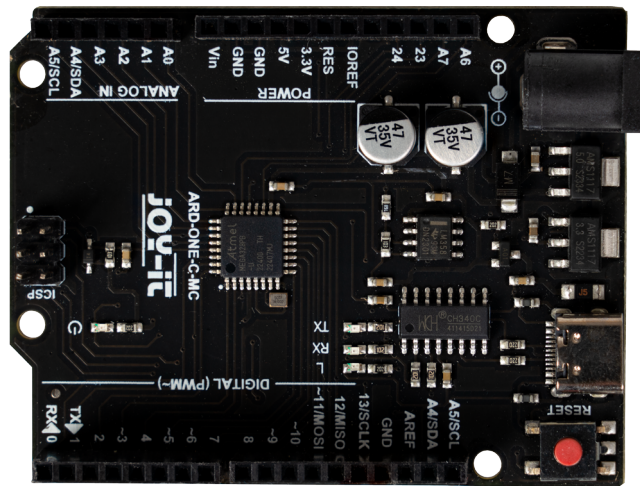


Arduino Uno (ARD ONE C)

Arduino kompatibles Uno Board mit ATmega328PB



Bereich	
Standort	
Zugangsampel	

Beschreibung

Revision #5

Created 2026-05-12 19:07:23 UTC by Felix Obermaier

Updated 2026-06-10 15:51:06 UTC by Felix Obermaier